





Preface	7
---------	---

Our Brand

The Birth of a Brand	8-9
The First Saxon Era	10-11
Saxony Becomes Lower Saxony	12-13
The Circle Begins to Close	14-15
A New Zero Hour	18-19
The Roots of Perfection	20-21
Time Needs Time	22-23

Our Collection

M2	26-39
Saxon One	40-55
Saxon One Lady	56-59
Grand Flieger	60-73
Patria	74-85
Tempostopp	86-91
Hommage	92-99

Our Involvement

The Tutima Academy of Aviation Safety	102-103
Partner of the German Aero Club	104-105
The Tutima Racing Yacht	106-107





Made for those who do.
Since 1927.

Preface

It is said that Tutima is most at home where mankind defies the elements:
in the cockpit of an airplane. On the high seas. Navigating long, fast curves.
And it's true: that's where a Tutima feels most at home. That's where it wants to go.

However, that is only half the truth. For home is not only where we go.
Home is also where we come from. Home is the spirit in which we grow up.
That which determines who we are because it accompanies our becoming.

For Tutima, this first home was always Glashütte. That world-famous little town
in Saxony with its immeasurably rich technical inheritance.
Here is where the Tutima brand was founded. And this is where
we came home to after more than 70 eventful years.

With the Tutima HOMMAGE Minute Repeater we created a new milestone for
the art of Glashütte watchmaking. A nod to Dr. Ernst Kurtz, the founder of our
brand. And with our first new collection fully created in Glashütte,
our family-owned and -run company proves that old values and new horological
visions have finally found a place where they can unite.

Some call this place Glashütte. We call it home.

Jörg Delecate



Dieter Delecate





Tutima Caliber 58
(1930s)

THE BIRTH OF A BRAND

It was the year 1927. In all of Europe, an awakening was in the air. Technical innovation, young arts like film and photography, and unprecedented music like jazz made this decade into the Golden Twenties. Even in Glashütte, world-famous as the city of timepieces since the nineteenth century, the belief in tomorrow



was tangible. Here, in the midst of crisis, two companies were founded: Uhren-Rohwerke-Fabrik Glashütte AG (UROFA) and Uhrenfabrik Glashütte AG, known as UFAG. Chairman and Managing Director of both was Dr. Ernst Kurtz, a jurist who quickly recognized that it was not

the still widely utilized pocket watch to which the future would belong, but the wristwatch. Very soon, his best models had no need to shun

comparison to Swiss brands. Because they were especially reliable and durable, they received the name “Tutima”, derived from the Latin word for “safe, secure.” A brand was born.





Two-Button-Pilot's Chronograph "Tutima"
(1941)

THE FIRST SAXON ERA



Rapid technical development in the early twentieth century precipitated the rise of the wristwatch. For those who needed to drive a car or pilot an airplane,

the possibility of reading the time at a flick of the wrist was of vital importance. It was especially demanded of pilot's watches that they be able to withstand stress, easy to use, and precise. Thanks to their superior technology and craftsmanship, wristwatches by Tutima quickly garnered an excellent reputation. In fact, the pilot's watch from 1941 became legendary. But just four years later, Tutima seemed about to fold.



A devastating air raid only hours before the end of the war destroyed the factory; shortly thereafter, Soviet troops occupied the state. Legends don't die quite that easily, though.



Tutima Military Chronograph, Ref. 798
(1984)



Tutima Chronographs are
official standard equipment
of NATO pilots.

SAXONY BECOMES LOWER SAXONY



In 1945, Germany experienced its zero hour. However, with gumption, entrepreneurial spirit, and inventiveness, its people achieved an

economic miracle. Like some of the company's employees, Dr. Kurtz was able to move to the West shortly before the end of the war. Together, they preserved the ideals of the art of Glashütte watchmaking in a Lower Saxon



community called Ganderkesee: technical finesse, spirit of innovation, and knowledge of their roots made the new start into a success story, which has been decisively continued by Dieter Deleate since the 1960s. When the Tutima



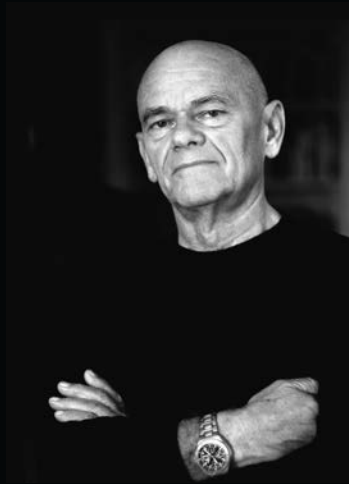
Military Chronograph ref. 798 was voted the official pilot's watch of NATO in 1984, the brand had once again arrived where it belonged: up there.





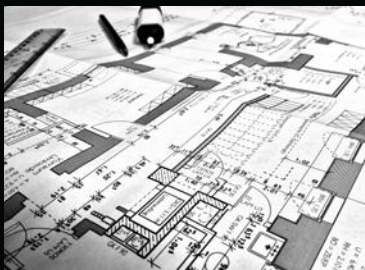
Grand Classic Alpha
(2008)

THE CIRCLE BEGINS TO CLOSE



As the Iron Curtain fell and Germany was reunited after decades of separation, Dieter Delecate began to mature a plan to return to Glashütte. However, in stark contrast to other traditional Saxon brands, Tutima had long since established itself in its

new West German home. A quick move was thus not an option. A new factory was at first established in parallel to the one in Ganderkesee, where, in 2008, another milestone was created in the shape of the Grand Classic Alpha model. At the same time, in Glashütte's former rail station maintenance depot, in very



close proximity to the historical factory, the new home of the brand began to take shape. When on May 14, 2008, the new factory was put to work, the circle began to close.





Welcome to a new reckoning of time.



„HOMMAGE“ Minute Repeater
(2011)

A NEW ZERO HOUR



Not quite three years later, Tutima presented a new masterpiece: the Tutima HOMMAGE. This first minute repeater to be completely developed and produced in Glashütte is, thanks to its technical perfection and

finesse, a respectful bow to company founder Dr. Ernst Kurtz. And one that had horological enthusiasts all over the world listening up. Thanks to its acoustic time signal, the HOMMAGE rang in a new era in the company history. With the presentation of its Saxon One, Grand Flieger, M2, and Patria to professional circles in April 2013, the brand introduced four entirely new watch families that all have one thing in common: they make up the first Tutima



collection for 68 years to have been created in Glashütte. These watches are proof that a step backward can also lead into the future.



THE ROOTS OF PERFECTION

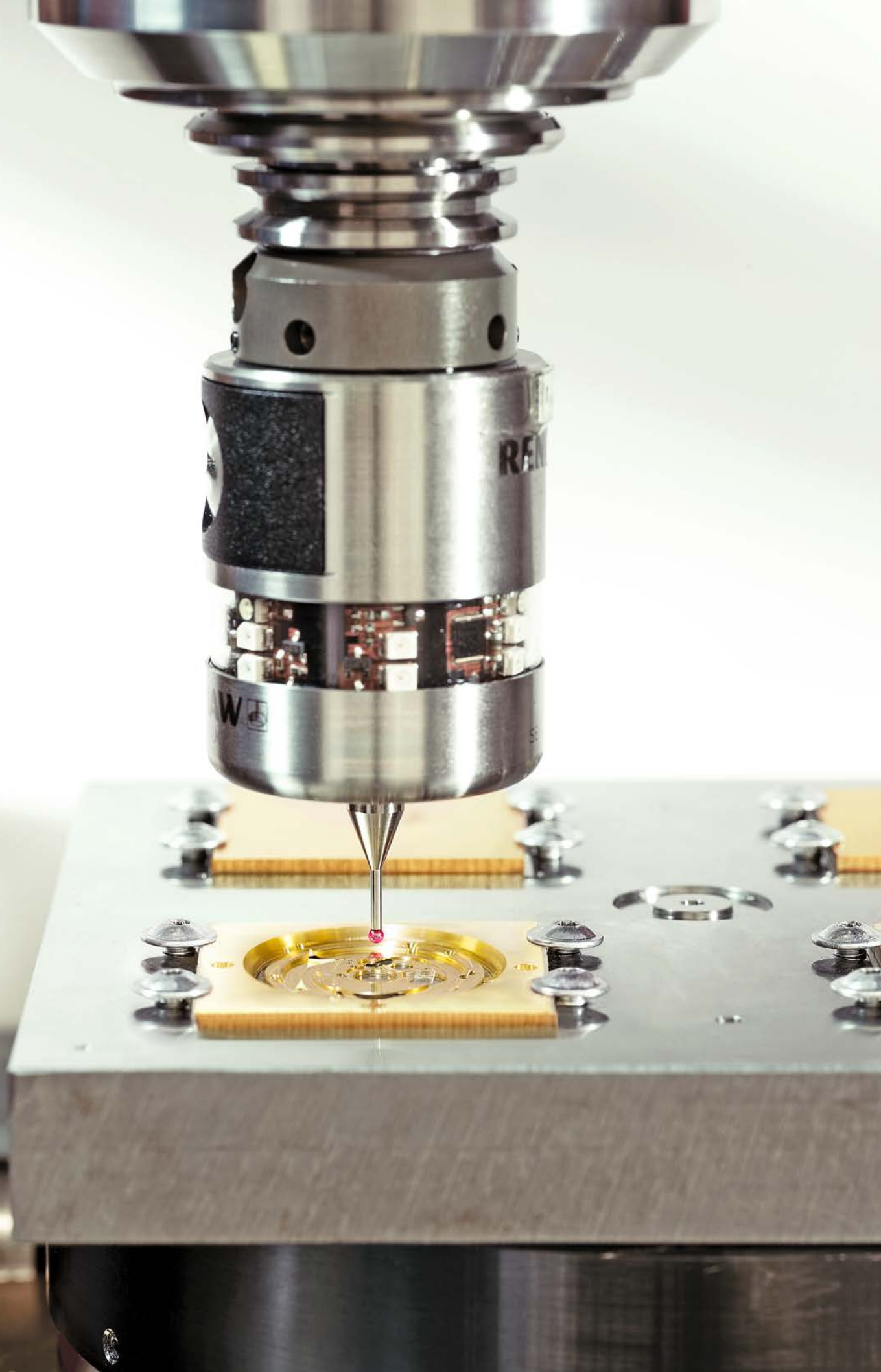


The beginnings of watchmaking in Glashütte are deeply entwined with the secluded Eastern Ore Mountains: watchmakers had to make almost all their parts themselves. Some of them became independent. It was Dr. Ernst Kurtz

who brought the lone wolves scattered across the Müglitz valley together under one roof in a factory at the end of the 1920s, developing modern work structures. It was this spirit that already characterized our philosophy and operating principles during the times of UFAG - and continues to do so now. Today, we design and develop our own watch movements, like caliber 617. This classic movement comprises 166 individual



components of the highest quality, produced on CNC tooling machines and traditionally finished by hand. The self-produced spring barrel, gear train, and oscillating system are also utilized in the minute repeater.



TIME NEEDS TIME

On the road to success there are no shortcuts. And thus the creation of a complicated timekeeper calls for one thing above all: a lot of time. Because two to three years of planning and development may pass before a watch becomes a complete Tutima.



This boundless passion and patience are the reason



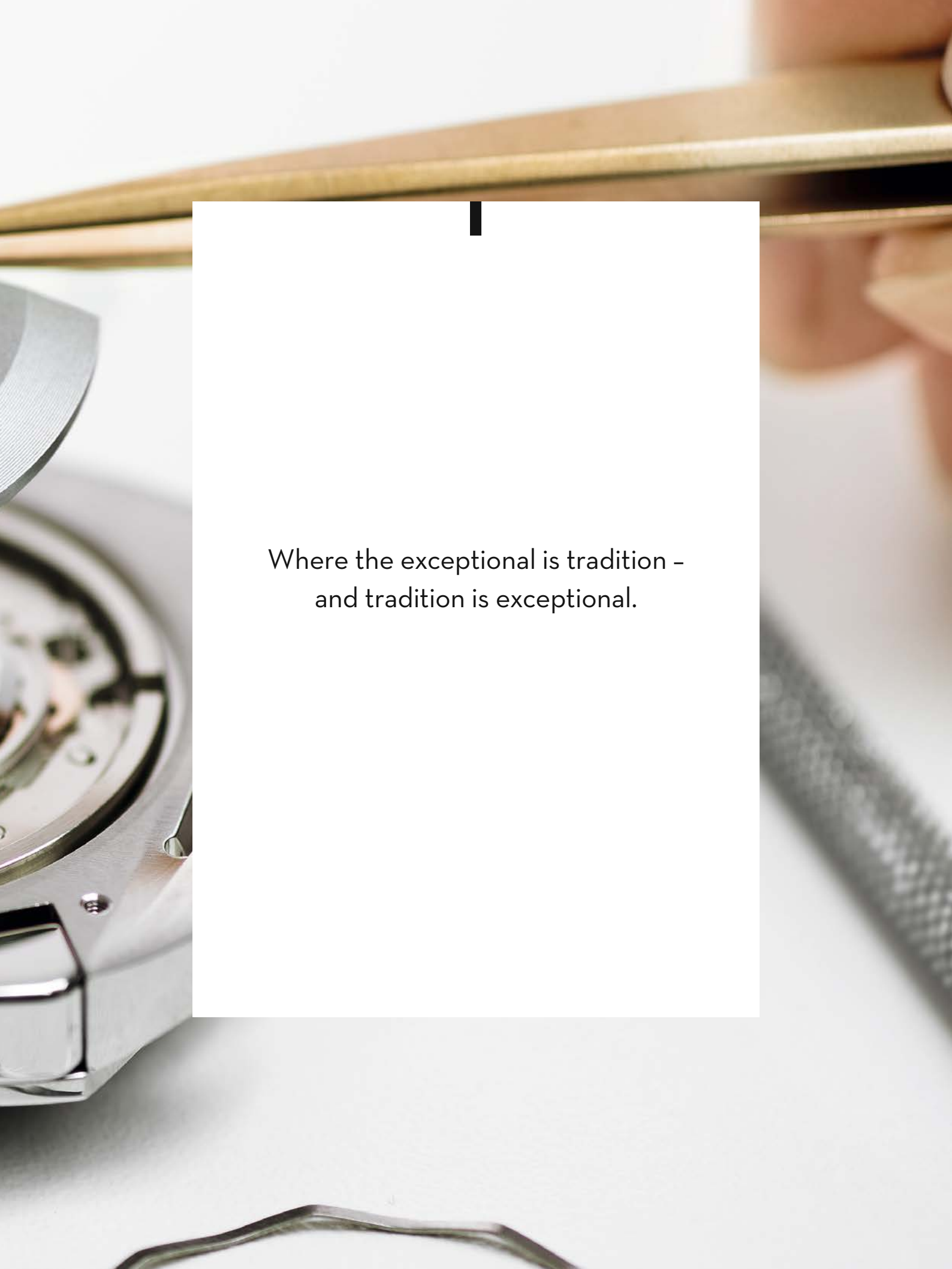
that at Tutima, special movement modules such as the chronograph caliber Tutima 521 are created. It is based on caliber ETA Valjoux 7750, and replaces the Swiss caliber Lémania 5100, which is no longer in production. The challenge

of this module was not only to make sure that it reliably functions without compromise but also to pack it into the smallest possible amount of space. The result is a masterful




construction that we have registered for a patent.





Where the exceptional is tradition -
and tradition is exceptional.



For those who feel
at home
where the air gets thinner.

M2



Uncompromising functionality and absolute reliability are the basic principles of a professional timing instrument. The NATO chronograph by Tutima, developed in 1984 and the official service watch of the German army's pilots to this day, has outstandingly proven itself in global use for decades.

Now the M2 arrives to continue this classic timepiece's success story. We have made several improvements that will not only profit professional users but also sporty, active amateurs.



M2

Nothing can rattle it.

Good legibility, reliable functionality, high comfort level and water resistance, a large sweep minute counter, pressure-resistant for use to 15,000 meters above sea level, and shockproofed for blows, vibrations, and acceleration up to 7 g in all directions: these are the enormous prerequisites that the procurement office and forces alike put upon the Tutima NATO chronograph in 1984.

Our reedition, the M2, even surpasses these prerequisites. In the classic from 1984, Swiss caliber Lémania 5100 kept the time. Since this is no longer in production, we have integrated our own caliber Tutima 521 into the M2. It is protected by a pure titanium case pressure-proofed to 30 atm including a strong sapphire crystal coated with anti-reflective treatment on both sides and an additional casing of mu-metal. This nickel-iron alloy binds magnetic field streams so that they do not even reach the movement.

The integrated push buttons are furnished with grooved neoprene inlays.

The hour counter has its own scale. The less often consulted display of running seconds and 24 hours modestly step out of the limelight. The time and chronograph hands as well as the hour markers are coated with luminous Super-LumiNova. This ensures good legibility, even under adverse lighting conditions. The Pioneer model variation additionally contains a nonslip rotating bezel with 14 luminous capsules so that set time intervals are easily recognizable even in full darkness.

This model comes on a titanium link bracelet with folding clasp. The box that the M2 titanium bracelet chronographs are delivered in additionally contains a Kevlar weave strap as well as a tool set for changing the strap.





MADE IN

GERMANY

Tutima
GLASHÜTTE SA

28

M2

Automatic movement chronograph cal. Tutima 521. Rotor with gold seal. 25 jewels. Polished screws. Power reserve when fully wound 48 hours. Date display. Hour, minute, small second. Chronograph 60-second counter, 60-minute counter and 12-hour counter. Sweep second and minute counters. 24-hour display.

Solid pearl-blasted titanium case. Soft-iron inner case for protection from magnetic fields. Water-resistant 30 atm. Integrated push buttons with neoprene inlay. Sapphire crystal, anti-reflective on both sides. Screw-in crown. Screw-in case back.



M2
6450-02

Kevlar strap with titanium clasp.
Diameter: 46 mm
Height: 15.5 mm



M2
6450-03

Solid titanium bracelet with folding clasp.
Diameter: 46 mm
Height: 15.5 mm

M2 Pioneer

Automatic movement chronograph cal. Tutima 521. Rotor with gold seal. 25 jewels. Polished screws. Power reserve when fully wound 48 hours. Date display. Hour, minute, small second. Chronograph 60-second counter, 60-minute counter and 12-hour counter. Sweep second and minute counters. 24-hour display.

Solid pearl-blasted titanium case. Soft-iron inner case for protection from magnetic fields. Water-resistant 30 atm. Integrated push buttons with neoprene inlay. Bidirectionally rotating bezel with inserted luminescent capsules. Sapphire crystal, anti-reflective on both sides. Screw-in crown. Screw-in case back.



M2 Pioneer
6451-02

Kevlar strap with titanium clasp.
Diameter: 46.5 mm
Height: 16 mm



M2 Pioneer
6451-03

Solid titanium bracelet with folding clasp.
Diameter: 46.5 mm
Height: 16 mm



M2
6450-03

Instruction Manual


Timitima
GLASHÜTTE / SA



M2 SEVEN SEAS

Extremely waterproof, shock resistant and robust

With the M2 Seven Seas, Tutima introduces a high-performance highlight that is not only convincing for professional users but also for sporty amateurs.

Tutima's newly released model responds to frequent requests for a three-handed self-winding model in the M2 chronograph family. This freshly unveiled model expands that series and is instantly recognizable as a new addition to the M2 family.

This wristwatch is every bit as strong as its predecessor. With each successive mission that it successfully completes, the M2 Seven Seas adds another chapter to the success story begun by the traditional Tutima Military Chronograph.

The Seven Seas encases caliber Tutima 330, a self-winding movement ennobled with Tutima rotor with 750 gold seal. In addition to a date display, this movement also powers a day-of-the-week indicator.

With a case made of pure titanium and a 3 mm-thick sapphire crystal, a screwed crown and a screwed back, the Seven Seas has proven itself able to readily withstand extremely high pressures up to 50 atm. This extraordinary robustness means that the Seven Seas is predestined for sporty adventures on the world's oceans. The sapphire crystal is antireflective to assure maximal legibility. The readily grasped bezel is rotatable in only one direction, thus pre-empting the potentially fatal error of inadvertently lengthening the intended dive time. As an alternative to the tough titanium bracelet, the sturdy Kevlar strap is highly resistant. Its inner surface and its seam perfectly match the colour scheme of the watch, which is available with either a deep blue or matt black dial.





**M2 Seven Seas
6151-01**

Kevlar strap with titanium folding clasp.
Diameter: 44 mm
Height: 13.3 mm



**M2 Seven Seas
6151-02**

Solid titanium bracelet with folding clasp.
Diameter: 44 mm
Height: 13.3 mm



**M2 Seven Seas
6151-03**

Kevlar strap with titanium folding clasp.
Diameter: 44 mm
Height: 13.3 mm



**M2 Seven Seas
6151-04**

Solid titanium bracelet with folding clasp.
Diameter: 44 mm
Height: 13.3 mm

M2 Seven Seas

Automatic movement cal. Tutima 330.
Rotor with gold seal. 25 jewels. Polished screws. Power reserve when fully wound 38 hours. Date display. Hour, minute, sweep second, day of week.

Solid pearlblasted titanium case. Water-resistant 50 atm. Unidirectionally rotating bezel with scaling and lucent reference point Super-LumiNova. Sapphire crystal, anti-reflective. Screw-in crown. Screw-in case back.

M2 Coastline

Automatic movement cal. Tutima 330.
Rotor with gold seal. 25 jewels. Polished
screws. Power reserve when fully wound
38 hours. Date display. Hour, minute, sweep
second, day of week.

Satin-finished titanium case. Water-resistant
30 atm. Sapphire crystal, anti-
reflective. Screw-in crown. Screw-in
case back.



M2 Coastline 6150-02

Solid titanium bracelet with folding clasp.
Diameter: 43 mm
Height: 13 mm



M2 Coastline 6150-03


Leather strap with titanium clasp.
Diameter: 43 mm
Height: 13 mm



M2 Coastline 6150-04

Solid titanium bracelet with folding clasp.
Diameter: 43 mm
Height: 13 mm





For those who don't
need GPS
to know where they stand.

SAXON ONE



A new era of time measurement begins. The Saxon One is the highlight of the Tutima collection. Our dynamic new beginning at our founding location is manifest within it. As many times throughout our moving history, we first had to break with tradition in order to realize our idea, thus once again founding our own tradition.



SAXON ONE

Being edgy. The new aesthetic.

The Saxon One is a wristwatch full of character – sporty and elegant at the same time – establishing an entirely new style in the world of German watches. Sharp lines of light dominate the steely architecture and separate the finely satin-finished from the polished surfaces. The three-dimensional, pyramid-shaped bezel achieves a harmonious transition to a subtly designed rotating bezel, whose elegance finely underscores the dynamic chronograph. The screw-in crown is well protected between two high flanks, which harmoniously build a unit with the large pushers set well into the case.

The mechanical movement of the Saxon One is outfitted with automatic winding and offers a power reserve of 48 hours. The heart of the chronograph is our own caliber Tutima 521; thanks to it, the Saxon One enjoys our own chronograph module, which displays the large sweep minute counter. The movement is shock-protected and water-resistant to 20 atm underneath a screw-down case back with a sapphire crystal window.

The slightly domed crystal above the dial is also made of sapphire crystal and is anti-reflective on both sides, showcasing every detail of the dial with its applied markers and fine scales. The Saxon One is available as a three-handed automatic in a 42-mm case and as a – slightly larger – chronograph, outfitted with a choice of opaline silver-white, opaline anthracite or royal blue dial as well as a stainless steel link bracelet or hand-stitched alligator strap.

The newest member of this successful watch family is the Saxon One M. This distinctive automatic wristwatch, which presents itself with a slightly smaller case in 40-mm-diameter midsize format, makes entry into the luxury class affordable.





Saxon One Automatic

Automatic movement cal. Tutima 330. Rotor with gold seal. 25 jewels. Polished screws. Power reserve when fully wound 38 hours. Date display. Hour, minute, sweep second, day of week.

Stainless steel case. Water-resistant 20 atm. Bidirectionally rotating bezel with red reference marker. Domed sapphire crystal, anti-reflective on both sides. Screw-in crown. See-through back with sapphire crystal.



Saxon One Automatic 6120-04

Alligator strap with folding clasp.
Diameter: 42 mm
Height: 12.8 mm



Saxon One Automatic 6120-02

Stainless steel bracelet with folding clasp.
Diameter: 42 mm
Height: 12.8 mm



Saxon One Automatic 6120-03

Alligator strap with folding clasp.
Diameter: 42 mm
Height: 12.8 mm



Saxon One Automatic 6120-01

Stainless steel bracelet with folding clasp.
Diameter: 42 mm
Height: 12.8 mm



**Saxon One
Chronograph 6420-04**

Alligator strap with folding clasp.
Diameter: 43 mm
Height: 15.7 mm



**Saxon One
Chronograph 6420-02**

Stainless steel bracelet with folding clasp.
Diameter: 43 mm
Height: 15.7 mm

**Saxon One
Chronograph**

Automatic movement chronograph cal. Tutima 521. Rotor with gold seal. 25 jewels. Polished screws. Power reserve when fully wound 48 hours. Date display. Hour, minute, small second. Chronograph 60-second counter, 60-minute counter and 12-hour-counter. Sweep second and minute counters. 24-hour display.

Stainless steel case. Water-resistant 20 atm. Integrated push-buttons. Bidirectionally rotating bezel with red reference marker. Domed sapphire crystal anti-reflective on both sides. Screw-in crown. See-through back with sapphire crystal.



**Saxon One
Chronograph 6420-03**

Alligator strap with folding clasp.
Diameter: 43 mm
Height: 15.7 mm



**Saxon One
Chronograph 6420-01**

Stainless steel bracelet with folding clasp.
Diameter: 43 mm
Height: 15.7 mm





Saxon One Automatic Royal Blue

Automatic movement cal. Tutima 330. Rotor with gold seal. 25 jewels. Polished screws. Power reserve when fully wound 38 hours. Date display. Hour, minute, sweep second, day of week.

Stainless steel case. Water-resistant 20 atm. Bidirectionally rotating bezel with red reference marker. Domed sapphire crystal, anti-reflective on both sides. Screw-in crown. See-through back with sapphire crystal.

Saxon One Automatic Royal Blue 6120-05

Stainless steel bracelet with folding clasp.
Diameter: 42 mm
Height: 12.8 mm



Saxon One Chronograph Royal Blue 6420-06

Alligator strap with folding clasp.
Diameter: 43 mm
Height: 15.7 mm



Saxon One Chronograph Royal Blue 6420-05

Stainless steel bracelet with folding clasp.
Diameter: 43 mm
Height: 15.7 mm

Saxon One Chronograph Royal Blue

Automatic movement chronograph cal. Tutima 521. Rotor with gold seal. 25 jewels. Polished screws. Power reserve when fully wound 48 hours. Date display. Hour, minute, small second. Chronograph. 60-second-counter, 60-minute counter and 12-hour-counter. Sweep second and minute counters. 24-hour display.

Stainless steel case. Water-resistant 20 atm. Integrated push-buttons. Bidirectionally rotating bezel with red reference marker. Domed sapphire crystal anti-reflective on both sides. Screw-in crown. See-through back with sapphire crystal.

Saxon One Chronograph LS

Automatic movement chronograph cal. Tutima 521. Rotor with gold seal. 25 jewels. Polished screws. Power reserve when fully wound 48 hours. Date display. Hour, minute, small second. Chronograph. 60-second counter, 60-minute counter and 12-hour-counter. Sweep second and minute counters. 24-hour display.

Stainless steel case. Water-resistant 20 atm. Integrated push-buttons. Bidirectionally rotating bezel with embossed numbers and red reference marker. Domed sapphire crystal anti-reflective on both sides. Screw-in crown. See-through back with sapphire crystal.



Saxon One Chronograph LS 6422-O2

Alligator strap with folding clasp.
Diameter: 43 mm
Height: 15.7 mm



Saxon One Chronograph LS 6422-O1

Stainless steel bracelet with folding clasp.
Diameter: 43 mm
Height: 15.7 mm







**Saxon One M Automatic
6121-04**

Leather strap with folding clasp.
Diameter: 40 mm
Height: 11.6 mm



**Saxon One M Automatic
6121-03**

Stainless steel bracelet with folding clasp.
Diameter: 40 mm
Height: 11.6 mm

**Saxon One M
Automatic**

Automatic movement cal. Tutima 330.
Rotor with gold seal. 25 jewels. Polished
screws. Power reserve when fully wound
38 hours. Date display. Hour, minute, sweep
second, day of week.

Stainless steel case. Water-resistant 10 atm.
Domed sapphire crystal, anti-reflective.
Screw-in crown. See-through back with
sapphire crystal.



**Saxon One M Automatic
6121-01**

Stainless steel bracelet with folding clasp.
Diameter: 40 mm
Height: 11.6 mm



**Saxon One M Automatic
6121-05**

Stainless steel bracelet with folding clasp.
Diameter: 40 mm
Height: 11.6 mm

Saxon One M Automatic

Automatic movement cal. Tutima 330.
Rotor with gold seal. 25 jewels. Polished screws. Power reserve when fully wound 38 hours. Date display. Hour, minute, sweep second.

Stainless steel case. Water-resistant 10 atm.
Domed sapphire crystal, anti-reflective.
Screw-in crown. See-through back with sapphire crystal.



Saxon One M Automatic 6121-08

Leather strap with folding clasp.
Diameter: 40 mm
Height: 11.6 mm



Saxon One M Automatic 6121-07

Stainless steel bracelet with folding clasp.
Diameter: 40 mm
Height: 11.6 mm





SAXON ONE LADY

The Tutima Saxon One Lady.

A ladies' watch, stylish, dynamic, unique. No wonder, then, it was named "Saxon One Lady". Contoured light-refracting edges dominate the steel, cushion-shaped case architecture and contrast the finely satined and polished surfaces. With its 36 mm case diameter, it sits perfectly on slender wrists. Just like its masculine counterpart, the three-hand watch celebrates independence and sportiness – and therein its elegance.

With this striking new addition to its Glashütte collection, Tutima offers an automatic watch with a sweep seconds hand and date display at 3 o' clock. As part of its newly-styled design, some refined details attract the attention: the gently iridescent interplay of the mother-of-pearl dials is emphasized by the applied indexes. Each watch comes either with a hand-stitched, finely-coloured, alligator leather strap, or high-grade steel bracelet, matching the case and dial and fitted with a folding clasp. From the various models, one can find the perfect temporal partner for discerning women and special occasions.

Extra-specially, the execution with the sparkling, diamond-set bezel underlines the feminine touch and the exclusive character of the jewellery-like Saxon One Lady.

At its heart beats calibre Tutima 340 with automatic winding and a power reserve of 42 hours, mounted with pressure protection and water-resistant to 10 atm inside the screwed-down case with sapphire crystal, see-through case back.

Saxon One Lady

Automatic movement cal. Tutima 340. Rotor with gold seal. 21 jewels. Polished screws. Power reserve when fully wound 42 hours. Date display. Hour, minute, sweep second.

Stainless steel case. Water-resistant 10 atm. Domed sapphire crystal anti-reflective on both sides. Screw-in crown. See-through back with sapphire crystal. Mother-of-pearl dial.



**Saxon One Lady
6700-01**

Stainless steel bracelet with folding clasp.
Diameter: 36 mm
Height: 10.7 mm



**Saxon One Lady
6700-02**

Alligator strap with folding clasp.
Diameter: 36 mm
Height: 10.7 mm
Optional:
6700-03 alligator strap white
6700-04 alligator strap lilac

Saxon One Lady Diamonds

Automatic movement cal. Tutima 340. Rotor with gold seal. 21 jewels. Polished screws. Power reserve when fully wound 42 hours. Date display. Hour, minute, sweep second.

Stainless steel case. Water-resistant 10 atm. Bezel with 48 diamonds, 0.72 carat in total. Domed sapphire crystal anti-reflective on both sides. Screw-in crown. See-through back with sapphire crystal. Mother-of-pearl dial.



**Saxon One Lady Diamonds
6701-01**

Stainless steel bracelet with folding clasp.
Diameter: 36 mm
Height: 10.7 mm



**Saxon One Lady Diamonds
6701-04**

Alligator strap with folding clasp.
Diameter: 36 mm
Height: 10.7 mm
Optional
6701-02 alligator strap ice blue
6701-03 alligator strap white



**Saxon One Lady S Diamonds
6703-02**

Leather strap with folding clasp.
Diameter: 34 mm
Height: 9 mm



**Saxon One Lady S Diamonds
6703-03**

Stainless steel bracelet with folding clasp.
Diameter: 34 mm
Height: 9 mm

**Saxon One Lady S
Diamonds**

Movement cal. T140 (Quarz). Date display.
Hour, minute.

Stainless steel case. Water-resistant 10 atm.
Domed sapphire crystal, anti-reflective.
Bezel with 46 diamonds, 0.69 carat in total.
6703-02 Mother-of-pearl-dial



**Saxon One Lady S
6702-02**

Leather strap with folding clasp.
Durchmesser: 34 mm
Höhe: 9 mm



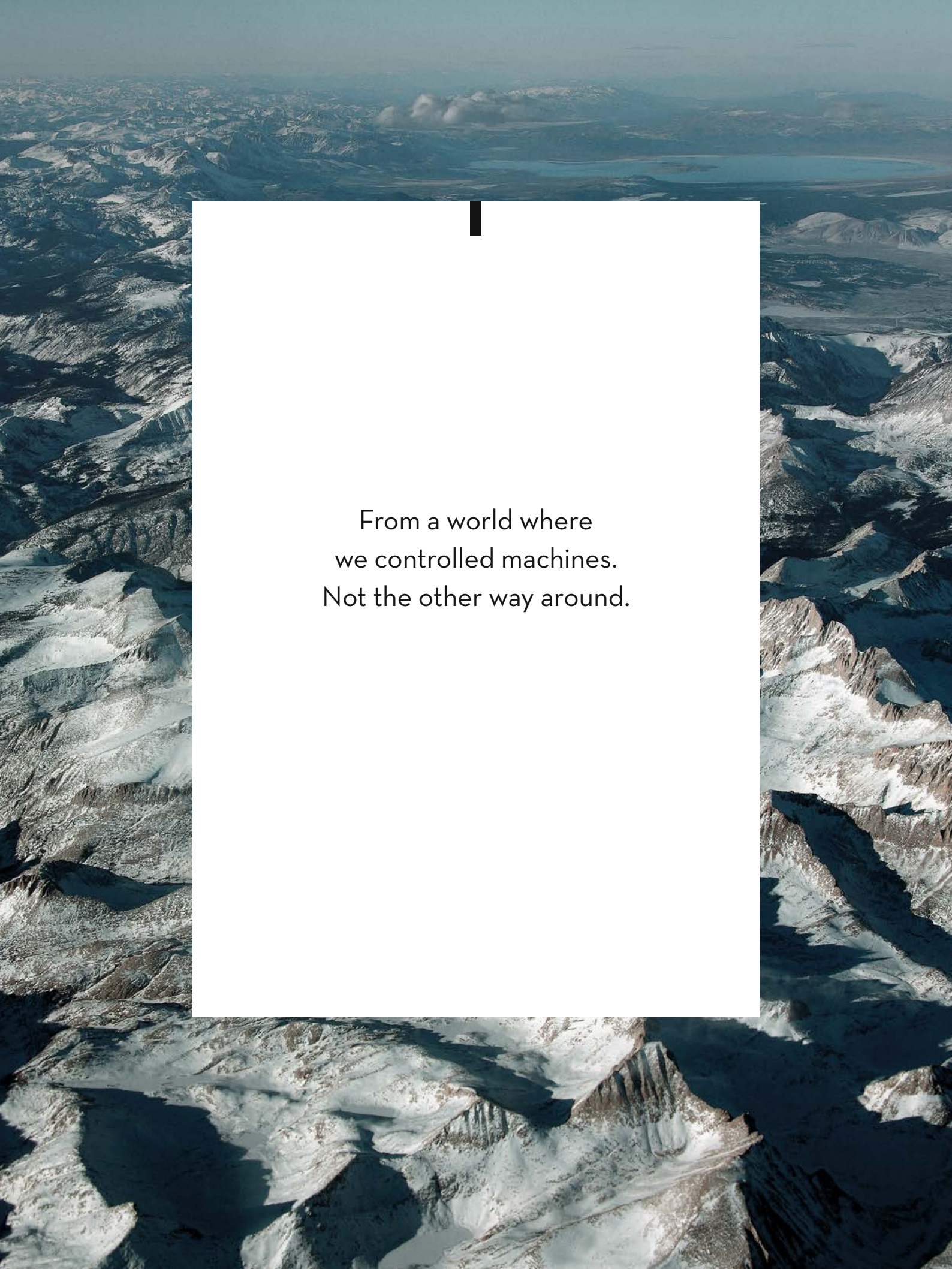
**Saxon One Lady S
6702-01**

Stainless steel bracelet with folding clasp.
Diameter: 34 mm
Height: 9 mm

Saxon One Lady S

Movement cal. T140 (Quarz). Date display.
Hour, minute.

Stainless steel case. Water-resistant 10 atm.
Domed sapphire crystal, anti-reflective.
Mother-of-pearl-dial.



From a world where
we controlled machines.
Not the other way around.

GRAND FLIEGER



A remarkable technical and aviation accomplishment is something that one should approach with respect. For example, the making of a remarkable chronograph. The Grand Flieger is the current reedition of the historical Tutima pilot's chronograph from the 1940s. A timepiece that has long since become a legend thanks to its reliability and functionality.



GRAND FLIEGER

A legend, retold.

In no other timepiece of our current collection is there so much pilot DNA as in the Grand Flieger, which directly descends from the legendary Tutima pilot's chronograph of 1941. The watch, outfitted with caliber UROFA 59, was the first German chronograph to boast addition timing and "Tempostopp," which we would call the flyback function today. This is a watch that set the standard in both aesthetics and function, and can well be viewed as a milestone of watch history.

At first glance, almost nothing has changed in 75 years: the characteristic design language of the round stainless steel case with rotating bezel and reference marker, the reserved typography of the matte black dial paired with contemporary luminous hands as well as the haptic quality of the leather strap exude the scent of history. However, the Grand Flieger with its diameter of 43 mm is much larger in dimension than the original and is, of course, outfitted with a modern automatic movement, which can be viewed through the generous transparent case back.

Like our three-handed variation, it is finished according to the rules of the Glashütte art of watchmaking and outfitted with a rotor decorated with our 750 gold Tutima seal. Alongside the Grand Flieger Classic in the typical vintage look that includes a fluted bezel, a model variation called Grand Flieger Airport with a smooth rotating bezel and 60-minute divisions is also available. The crown remains of the screw-in variety, and all timepieces in the Grand Flieger line are water-resistant to 20 atm.





Grand Flieger Classic

Automatic movement cal. Tutima 330. Rotor with gold seal. 25 jewels. Polished screws. Power reserve when fully wound 38 hours. Date display. Hour, minute, sweep second, day of week.

Stainless steel case. Water-resistant 20 atm. Bidirectionally rotating, fluted bezel with red reference marker. Domed sapphire crystal anti-reflective on both sides. Screw-in crown. See-through back with sapphire crystal.



**Grand Flieger Classic
6102-01**

Leather strap with folding clasp.
Diameter: 43 mm
Height: 13 mm



**Grand Flieger Classic
6102-02**

Stainless steel bracelet with folding clasp.
Diameter: 43 mm
Height: 13 mm

Grand Flieger Classic Chronograph

Automatic movement chronograph cal. Tutima 320. Rotor with gold seal. 25 jewels. Polished screws. Power reserve when fully wound 48 hours. Date display. Hour, minute, small second. Chronograph 60-second counter, 30-minute counter and 12-hour counter. Sweep second counter.

Officially certified German chronometer according to DIN norm 8319.

Stainless steel case. Water-resistant 20 atm. Bidirectionally rotating, fluted bezel with red reference marker. Domed sapphire crystal anti-reflective on both sides. Screw-in crown. See-through back with sapphire crystal.



**Grand Flieger Classic
Chronograph 6402-01**

Leather strap with folding clasp.
Diameter: 43 mm
Height: 16 mm



**Grand Flieger Classic
Chronograph 6402-02**

Stainless steel bracelet with folding clasp.
Diameter: 43 mm
Height: 16 mm



**Grand Flieger Classic
6102-03**

Leather strap with folding clasp.
Diameter: 43 mm
Height: 13 mm



**Grand Flieger Classic
6102-04**

Stainless steel bracelet with folding clasp.
Diameter: 43 mm
Height: 13 mm



**Grand Flieger Classic
6102-06**

Stainless steel bracelet with folding clasp.
Diameter: 43 mm
Height: 13 mm

Grand Flieger Classic

Automatic movement cal. Tutima 330. Rotor with gold seal. 25 jewels. Polished screws. Power reserve when fully wound 38 hours. Date display. Hour, minute, sweep second, day of week.

Stainless steel case. Water-resistant 20 atm. Bidirectionally rotating, fluted bezel with red reference marker. Domed sapphire crystal anti-reflective on both sides. Screw-in crown. See-through back with sapphire crystal.

Grand Flieger Airport

Automatic movement cal. Tutima 330. Rotor with gold seal. 25 jewels. Polished screws. Power reserve when fully wound 38 hours. Date display. Hour, minute, sweep second, day of week.

Stainless steel case. Water-resistant 20 atm. Bidirectionally rotating bezel with luminous marking. Domed sapphire crystal anti-reflective on both sides. Screw-in crown. See-through back with sapphire crystal.



**Grand Flieger Airport
6101-01**

Leather strap with folding clasp.
Diameter: 43 mm
Height: 13 mm



**Grand Flieger Airport
6101-02**

Stainless steel bracelet with folding clasp.
Diameter: 43 mm
Height: 13 mm



**Grand Flieger Airport
6101-03**

Leather strap with folding clasp.
Diameter: 43 mm
Height: 13 mm



Grand Flieger Airport Chronograph 6401-01

Leather strap with folding clasp.
Diameter: 43 mm
Height: 16 mm



Grand Flieger Airport Chronograph 6401-02

Stainless steel bracelet with folding clasp.
Diameter: 43 mm
Height: 16 mm



Grand Flieger Airport Chronograph 6401-03

Kevlar strap with folding clasp.
Diameter: 43 mm
Height: 16 mm

Grand Flieger Airport Chronograph

Automatic movement chronograph cal. Tutima 320. Rotor with gold seal. 25 jewels. Polished screws. Power reserve when fully wound 48 hours. Date display. Hour, minute, small second. Chronograph 60-second counter, 30-minute counter and 12-hour counter. Sweep second counter.

Officially certified German chronometer according to DIN norm 8319.

Stainless steel case. Water-resistant 20 atm. Bidirectionally rotating bezel with luminous marking. Domed sapphire crystal anti-reflective on both sides. Screw-in crown. See-through back with sapphire crystal.





**Flieger
6105-01**

Leather strap with folding clasp.
Diameter: 41 mm
Height: 13 mm



**Flieger
6105-02**

Stainless steel bracelet with folding clasp.
Diameter: 41 mm
Height: 13 mm



**Flieger
6105-03**

Leather strap with folding clasp.
Diameter: 41 mm
Height: 13 mm



**Flieger
6105-04**

Stainless steel bracelet with folding clasp.
Diameter: 41 mm
Height: 13 mm

Flieger

Automatic movement cal. Tutima 330.
Rotor with gold seal. 25 jewels. Polished screws. Power reserve when fully wound 38 hours. Date display. Hour, minute, sweep second.

Stainless steel case. Water-resistant 10 atm.
Domed sapphire crystal anti-reflective.
Screw-in crown. See-through back with sapphire crystal.

Flieger

Automatic movement cal. Tutima 330.
Rotor with gold seal. 25 jewels. Polished
screws. Power reserve when fully wound
38 hours. Date display. Hour, minute, sweep
second.

Stainless steel case. Water-resistant 10 atm.
Domed sapphire crystal anti-reflective.
Screw-in crown. See-through back with
sapphire crystal.



**Flieger
6105-29**

Leather strap with folding clasp.
Diameter: 41 mm
Height: 13 mm



**Flieger
6105-30**

Stainless steel bracelet with folding clasp.
Diameter: 41 mm
Height: 13 mm



**Flieger
6105-05**

Leather strap with folding clasp.
Diameter: 41 mm
Height: 13 mm



Sky
6105-22

Milanaise-Stainless steel bracelet
with folding clasp.
Diameter: 41 mm
Height: 13 mm



Sky
6105-24

Milanaise-Stainless steel bracelet
with folding clasp.
Diameter: 41 mm
Height: 13 mm




Sky
6105-26

Milanaise-Stainless steel bracelet
with folding clasp.
Diameter: 41 mm
Height: 13 mm

Sky

Automatic movement cal. Tutima 330.
Rotor with gold seal. 25 jewels. Polished
screws. Power reserve when fully wound
38 hours. Date display. Hour, minute, sweep
second. Dégradé dial.

Stainless steel case. Water-resistant 10 atm.
Domed sapphire crystal anti-reflective.
Screw-in crown. See-through back with
sapphire crystal.

A high-angle, wide shot of a grand, ornate theater interior. The theater features multiple tiers of wooden seating, decorative architectural elements, and a central aisle. The lighting is warm and focused on the stage area. A large white rectangular box is overlaid on the center of the image, containing text.

Higher, faster, further.
Why not more beautiful?

PATRIA



Modest gold watches made with superior manufacturing skill, have a centuries-old tradition in Germany. After Glashütte's new rise, the watchmakers and their fine watches were able to attain a world-renowned reputation once again. With the Patria, we keep Glashütte's deep-rooted horological tradition alive: the watch must be noble, beautiful, and precise.



PATRIA

Glashütte down to the smallest detail.

The finely silver-plated dial at first reveals nothing of the exquisite movement inside the Patria. Reserved and elegant, it displays the hours, minutes, and seconds, the latter within an unusually large, off-center scaled circle. The connoisseur, however, suspects the remarkable technology hidden behind the perfect, hand-finished hands.

More than 100 years ago, aficionados already praised the virtuosity of Glashütte's watchmakers. In the Patria, these traditions have now been revived to set new standards in the upper price segment.

According to vintage tradition, the bearing bores for the gear train bearings are placed underneath a large base plate that spans almost the entire diameter of the movement.

Its surface has been embellished with fine finishing and engraving, just as the area around the balance, balance cock, and escapement have been lovingly finished. Screw-mounted gold chatons that have been set into the three-quarter-plate and the decoration of the crown and ratchet wheels with an iridescent sunburst decoration constitute further highlights.

Through the sapphire crystal case back, one has an unimpeded view of the two steel winding wheels and the special click with its graceful steel spring. The heads of all screws have been polished according to vintage company tradition.

The skeletonized and finely finished balance cock allows a free view of Tutima's own oscillating system. The balance wheel outfitted with weighted regulating screws oscillates at a frequency of 21,600 vph and contains a Breguet hairspring with a special terminal curve - a detailed element completed by hand that adds honor to even such a noble tradition as that of Glashütte.





Tutima
GLASHÜTTE/SA



The finely finished, manually wound Tutima Caliber 617 and 618 are lovingly manufactured down to the last detail in our manufacture, completely according to Glashütte's sublime art of watchmaking.





**Patria
6600-01**

Alligator strap with 18-karat rose gold pin buckle.
Diameter: 43 mm
Height: 11.2 mm



**Patria
6600-02**

Alligator strap with 18-karat rose gold pin buckle.
Diameter: 43 mm
Height: 11.2 mm



**Patria Power Reserve
6602-01**

Alligator strap with 18-karat rose gold pin buckle.
Diameter: 43 mm
Height: 11.2 mm

Patria

Manual winding movement cal. Tutima 617. Diameter 31 mm, height 4.78 mm. 20 jewels, 3 of which are set in screw-mounted gold chatons. Screw balance with weighted screws and 4 regulating screws in slotted, threaded holes. Index-free oscillating system with Breguet hairspring, openworked balance cock, Glashütte three-quarter-plate. 21,600 vph. Power reserve when fully wound 65 hours. Hour, minute, small second.

18-karat rose gold case. Water-resistant 5 atm. Domed sapphire crystal anti-reflective. See-through back with sapphire crystal.

Patria Power Reserve

Manual winding movement cal. Tutima 618. Diameter 31 mm, height 4.78 mm. 27 jewels, 3 of which are set in screw-mounted gold chatons. Screw balance with weighted screws and 4 regulating screws in slotted, threaded holes. Index-free oscillating system with Breguet hairspring, openworked balance cock, Glashütte three-quarter-plate. 21,600 vph. Power reserve when fully wound 65 hours. Hour, minute, small second. Display of power reserve.

18-karat rose gold case. Water-resistant 5 atm. Domed sapphire crystal anti-reflective. See-through back with sapphire crystal.


Tutima
GLASHÜTTE/SA





**Patria Dual Time
6601-01**

Alligator strap with 18-karat rose gold pin buckle.
Diameter: 43 mm
Height: 11.2 mm



**Patria Dual Time
6601-02**

Alligator strap with 18-karat rose gold pin buckle.
Diameter: 43 mm
Height: 11.2 mm

Patria Dual Time

Manual winding movement cal. Tutima 619. Diameter 31 mm, height 4.78 mm. 20 jewels, 3 of which are set in screw-mounted gold chatons. Screw balance with weighted screws and 4 regulating screws in slotted, threaded holes. Index-free oscillating system with Breguet hairspring, openworked balance cock, Glashütte three-quarter-plate. 21,600 vph. Power reserve when fully wound 65 hours. Hour, minute, small second, additional 12-hour display (second time zone).

18-karat rose gold case. Water-resistant 5 atm. Domed sapphire crystal anti-reflective. See-through back with sapphire crystal.





Patria Admiral Blue 6610-01

Alligator strap with pin buckle.
Diameter: 43 mm
Height: 11.2 mm

Patria Admiral Blue

Manual winding movement cal. Tutima 617. Diameter 31 mm, height 4.78 mm. 20 jewels, 3 of which are set in screw-mounted gold chatons. Screw balance with weighted screws and 4 regulating screws in slotted, threaded holes. Index-free oscillating system with Breguet hairspring, openworked balance cock, Glashütte three-quarter-plate. 21,600 vph. Power reserve when fully wound 65 hours. Hour, minute, small second.

Stainless steel case. Water-resistant 5 atm. Domed sapphire crystal anti-reflective. See-through back with sapphire crystal.



Patria 6610-02

Alligator strap with pin buckle.
Diameter: 43 mm
Height: 11.2 mm



Patria 6610-03

Alligator strap with pin buckle.
Diameter: 43 mm
Height: 11.2 mm

Patria

Manual winding movement cal. Tutima 617. Diameter 31 mm, height 4.78 mm. 20 jewels, 3 of which are set in screw-mounted gold chatons. Screw balance with weighted screws and 4 regulating screws in slotted, threaded holes. Index-free oscillating system with Breguet hairspring, openworked balance cock, Glashütte three-quarter-plate. 21,600 vph. Power reserve when fully wound 65 hours. Hour, minute, small second.

Stainless steel case. Water-resistant 5 atm. Domed sapphire crystal anti-reflective. See-through back with sapphire crystal.



TEMPOSTOPP

A Highlight in Ninety Years of Horological Tradition.

Tutima presents a surprising new development to coincide with the company's 90th anniversary: the Tutima Tempostopp is available in a limited edition of just 90 wristwatches, each of which is a celebrated highlight in the "Made in Glashütte" series of golden manufacture watches.

Following the sensational 2011 premiere of the HOMMAGE, the first German wristwatch caliber with minute repeater and the successful construction of the Tutima Patria in gold, a three-handed model encasing the HOMMAGE's basic caliber, the family business celebrates its ninetieth anniversary with the premiere of Caliber Tutima 659, another movement which was developed entirely by the Glashütte-based manufactory.

Three years in the making, this masterpiece from Tutima revives a grand tradition. Tutima's new Caliber Tutima 659 is a reminiscence of the Glashütte UROFA caliber 59 from the 1940s, which was developed for the historic Tutima Fliegerchronograph and which made that watch into the first German chronograph with Tempostopp and additive stopping. The legendary pilot's watch came to epitomize sturdy robustness, reliability and precision.

Now this success story continues at Tutima's original location with the debut of Caliber Tutima 659. Uniting the latest technologies and the virtues of the watchmaker's art as traditionally practiced in Glashütte, all parts of this exquisite movement are specially engineered, fabricated and finished on Tutima's premises.

The complex additional flyback function, which was known by its German name "Tempostopp" when it first debuted enables the user to measure immediately successive intervals.

The new Tutima Tempostopp, one of the rare German-made "flyback" calibers, carries the culture of Glashütte's chronographic artistry into the future and embodies another brilliant achievement at the brand's renowned original location.



MADE IN GERMANY



Tutima
GLASHÜTTEA

TEMPOSTOPP

ANY



A highly complex interplay of diverse mechanisms:
Caliber Tutima 659 is one of very few "made in Glashütte" chronograph calibers.
This caliber was developed by Tutima and superlatively unites experience, patience
and precise handcraftsmanship.



Tempostopp 6650-01

Alligator strap with 18-karat rose gold pin buckle.
Limited to 90 pieces.


Tempostopp

Manual winding movement cal. Tutima 659.
Diameter 33.7 mm, height 6.6 mm. 28 jewels.
Screw balance with weighted screws and 4 regulating screws in slotted, threaded holes.
Index-free oscillating system with Breguet hairspring, hand-engraved balance cock.
21,600 vph. Power reserve when fully wound 65 hours. Hour, minute, small second.
Column-wheel chronograph with additive stopping, flyback function, jumping counter for up to 30 elapsed-minutes.

18-karat rose gold case. Water-resistant 5 atm. Domed sapphire crystal anti-reflective on both sides. See-through back with sapphire crystal.

Diameter: 43 mm

Height: 12.95 mm



Outstanding precision engineering
has its price:
the Couture Time Award.

*Awarded at "Couture Time" for
technical excellence, USA 2013.

HOMMAGE



Dreams sound good. Especially when they come true.

The HOMMAGE Minute Repeater with its acoustic time signal is the most exclusive and demanding watch that Tutima has ever built. About three years of development, the highest level of complication, and value from the best watchmakers, who perfectly finish it with the greatest care: the HOMMAGE, limited to just 25 pieces is the symbol of melodious skill. Upon activating the slide, two gongs create an acoustic signal that relays the time precisely to the minute.





HOMMAGE

Perfection that you can hear.

A melodious premiere in Glashütte: the long watch tradition of Glashütte reached a climax with the introduction of the Tutima HOMMAGE Minute Repeater.

More than 550 filigreed precision components in the movement alone join together in perfect harmony.

Their successful interplay is the result of long, painstaking adjustment work that not only influences the mechanical and kinetic motion but also the acoustic elements like the two gong springs and the hammers. Four of the total of 42 jewels are set in screw-mounted gold chatons; all levers, springs, rakes, and cams are studiously beveled by hand. Both black-polished hammers count the hours, quarter hours, and minutes that have passed in the rhythm of the repeater.

The special skill with which our watchmaker team worked has been recognized the world over. In 2013, the HOMMAGE even won the sought-after Couture Time Award in the USA for its exceptional fine mechanics. There will only be 25 examples of the repeater, which is limited to 20 pieces in rose gold and 5 in platinum.



800008

Glashütte Original
GLASHÜTTE/SA.

MADE IN GERMANY



HOMMAGE

TITAN

06 EN

GLASHUTTE/USA

FORTY-TWO (42)
JEWELS



A visual enjoyment of the finest mechanics. During the development of this rare complication, which is even called the “queen of complications” in traditional watchmaking, our movement designers focused on fine aesthetics alongside melodious acoustics.





Hommage Roségold 6800-02

18-karat rose gold case.
Alligator strap with 18-karat
rose gold pin buckle.
Limited to 20 pieces.



Hommage Platin 6800-01

Platinum case.
Alligator strap with
platinum pin buckle.
Limited to 5 pieces.

Hommage

Manual winding movement cal. Tutima 800.
Diameter 32 mm, height 7.2 mm. 42 jewels,
4 of which are set in screw-mounted gold
chatons. Screw balance with 14 gold
weighted screws and 4 regulating screws in
slotted, threaded holes, free-sprung Breguet
hairspring, pallet lever with domed pallets.
21,600 vph. Power reserve when fully
wound 65 hours. Hour, minute, small second.
Minute repeater for hours, quarter hours,
and minutes on two gongs. 550 movement
parts, Glashütte three-quarter-plate, gold-
plated, matte flat parts, all dial train
components finished by hand: all bevels
polished and surfaces tin-polished, hand-
engraved balance cock and barrel cover
of striking mechanism with relief engraving,
winding wheels with click and sunburst
polishing, gear train with fine mirror polish.


Domed sapphire crystal anti-reflective
on both sides.

See-through back with sapphire crystal.

Diameter: 43 mm

Height: 13.4 mm



An aerial photograph of a rugged, mountainous landscape. The terrain is dark and rocky, with a winding road or path visible. A large white rectangular overlay is positioned in the center of the image, containing text. The background shows a deep valley with a winding road and a large, flat-topped mountain peak in the distance.

From a world where
one's own drive is stronger
than any motor.



INVOLVEMENT

Excellence Provides Wings. The Tutima Academy of Aviation Safety.

Only a very few watch manufacturers can claim that their timekeepers tick on the wrists of the best pilots in the world – like, for example, Sean D. Tucker, an American aerobatic flight legend and celebrated member of the National Aviation Hall of Fame. This American pilot boasts more than 24,000 flight hours; he has delighted more than 80 million fans in more than 1,000 appearances of more than 425 air shows.

In 2006, we founded the Tutima Academy of Aviation Safety together with Sean D. Tucker, a leading global school for precision flight training in California. Here our joint passion for absolute perfection and aviation excellence, which can't excuse even the smallest error, is manifested. The Academy offers pilots from all over the world the possibility to train with the best aviation instructors on the planet – and in a unique training atmosphere. Situated directly on the coast of the Pacific Ocean, King City has the best weather in the entire USA. Here the Academy has its headquarters underneath its own “aerobatics box”: airspace that is reserved for its own training flights.

The Tutima Academy of Aviation Safety includes a comprehensive spectrum of training programs, which range from aviation safety training through aeronautical perfection to breathtaking aerobatic maneuvers at top international competition levels. From the beginner to the pro, innumerable pilots have perfected their skills at the Tutima Academy, including airline and military pilots as well as aces competing in the big aerobatic shows.

Learn more at www.tutimaacademy.com



INVOLVEMENT

High Goals. Tutima. Partner of the German Aero Club.

The experience of moving in the third dimension inspires human beings today just as it did at the beginning of aviation. The dream of flying remains; the prerequisites, however, have very much changed over the course of time. As the main sponsor of the German national motorized flight team in the German Aero Club (DAeC) and global partner of aviation, Tutima is committed to raising the level of safety and perfecting aviation competence. There are more than 2,000 associations with a total of about 100,000 members organized in the DAeC, the governing body of aviation sports in Germany. The best and most talented pilots taking part in national and international competitions receive optimal training opportunities thanks to Tutima's funding.

At dizzying heights, it is team spirit, reciprocal encouragement toward peak performance, and strength of nerves that count. Even celebrating successes at the highest levels is part of that: in cooperation with the German Aero Club, the Tutima Award of the Skies was endowed for the first time in 2009, with Germany's top pilots competing against each other in the three disciplines navigational flight, helicopter flight, and aerobatic flight. Year after year, the audience is treated to maximal navigational precision and breathtaking aviation skills in a top-level performance.

Because aviation is a risky sport, a reliable chronograph belongs to the equipment of any responsible pilot. Tutima will continue to contribute to making the passion of aviation come alive and measurable even in the future.



Main sponsor of the German Aero Club



INVOLVEMENT

The Tutima Racing Yacht - Passion with Depth.

Stormy seas, meter-high waves, and new records are always in sight: oceangoing involvement is traditional at Tutima. As a watch manufacturer, we have not only made a name for ourselves with professional water sports timekeepers in the past but also as the sponsor of world-class sporting events.

Already in 2005, Tutima was sponsoring the world-famous Kieler Woche as the Official Timekeeper at the Kieler Woche Regattas and has been part of other international sailing highlights as well. Since 2009 even with our own ship: the 14-person female world and European championship crew regularly competes in international regattas in the dk46 racing cruiser that is 46 feet long, boasts a 23-meter mast height, and has around 230 square meters of sail surface.

Whether as a partner for sailing, or on board our own 14-meter racer, Tutima remains strongly anchored in sailing, setting its course for further international high points of the sailing world.

At www.tutima-yacht.de you can learn more about our yacht and the Tutima sailing team, current start dates, and logbook entries.

© Copyright 2019 Tutima Uhrenfabrik GmbH.

All rights reserved.

Tutima brands and models are internationally registered.

Models and technical specifications subject to change.

Errors and omissions excepted.

TUTIMA UHRENFABRIK GMBH NDL. GLASHÜTTE

Altenberger Straße 6, 01768 Glashütte/Sa., Germany

Telephone +49 35053 320-20

Fax +49 35053 320-222

info@tutima.com

www.tutima.com

